

## Product Line Overview

### 35 Series Labelers



- Individual models available for wraparound (35W), panel & wrap-around (35PW), and top & bottom panel (35B) labeling
- Capabilities to handle square, rectangular, round, and oval containers
- Capabilities to apply 2-, 3-, and 4-panel labels
- Microstepping and servo label applicators ensure accurate and repeatable label application

### 9000 Series Rotary



- Designed for accurate pressure sensitive labeling with large labels
- Servo drive system delivers true variable speed operation
- Rotary model (9000R) provides high-speed, high-accuracy labeling for the latest film technologies and outstanding product handling and stabilization for containers with complex geometries

### 9000 Series In-Line



- Servo-driven label applicators with touchscreen operator interfaces allow for a multitude of labeling applications – from squares and rectangles to rounds and ovals
- Heavy-duty conveyor and stainless steel base frame are designed for 24/7 operation
- Easy “no-tools-needed” changeover design makes product and label changeovers fast and easy

### Print and Apply Systems



- Include label design and database management software, plus custom middleware and network solutions
- “Batch print and apply” model 720 prints labels into a small loop that the applicator can draw from as needed, dramatically increasing speed capabilities as printing and applying are done simultaneously
- “1:1 print and apply” P/A series applies the label that has just been printed allowing the information printed on each label to be unique as in the case of sequential numbers or weight and price

### Label Applicators



- Full range of stepper- and servo-driven models available
- Choose from more than ten models that can be adapted for wipe-on, blow-on, or tamp/blow applications and offer speeds ranging from low to medium to high
- Accommodate a wide range of label materials and sizes

### Heads on Posts



- A wide variety of applicators supplied on stands are available for easy and accurate integration to your existing lines
- Can be supplied in wipe-on or blow-on configurations
- Print and apply models can be either “one-up” or “batch” configurations

# Barry-Wehmiller

# Accraply Product Line Overview

## In-Line Systems



- Fully-automatic labeling heads and other standard labeling components are brought together in the ideal configuration to meet application needs
- Intended for in-line installation with customer's automatic manufacturing line.
- Designed for side panel, front/back, wrap, bottom, and top applications
- Production throughputs from 50 to 200 products per minute

## High-Speed In-Line Systems



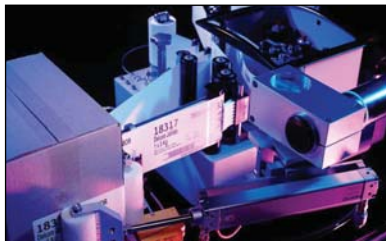
- Servo-driven applicator delivers primary labeling at speeds of up to 3000 inches per minute
- Touchscreen operator interface offers state-of-the-art controls for operation and labeling support
- 100% non-skewed labeling with dispense and wrap labeling and vertical roller fixture assembly
- Heavy-duty stainless steel base frame supports a multitude of inspection systems

## Rotary



- Directs product from a linear conveyor onto a rotating turret providing the opportunity to precisely control and turn products and apply one or more labels in orientation to product seams, other labels, or pre-applied graphics
- Multiple labeling heads can be positioned around the turret for applications such as front/back/neck or front/back/spot labeling – several models of stepper-drive labeling heads are available

## Label Dispensers



- Designed to smoothly release a label from its backing, ready for hand application to products
- Heavy duty manual dispensers are available in two widths while the electric model can be equipped with a hot stamp printer to print batch, date codes, and other variable data onto labels prior to application

## Semi-Automatic, Table Top



- Designed for smaller volume labeling environments, these rugged, off-line labelers sit on a table top or bench and require operator involvement
- Well-suited for side panel tamp, multi-panel, and cylindrical wrap applications
- Production throughput ranges up to 45 products per minute

## Wraparound Labelers



- Precise wraparound labeling on the widest variety of container shapes in the industry
- Simultaneous “dispense and wrap” application method provides product stability and non-skew labeling
- Either stepper- or servo-driven label applicators provide accurate and reliable application of a wide variety of label materials

**Custom Designed Equipment** for specialized labeling needs that go far beyond a standard system's configuration is a specialty of Accraply – we can meet your toughest labeling challenges with leading edge solutions employing vision verification, robotic product handling, detect/eject stations, laser printing, and much more.

## Accraply, Inc.

3580 Holly Lane North • Plymouth, MN 55447 USA • 763/557-1313  
935 South Milliken Ave. • Ontario, CA 91761 USA • 909/605-8200  
3070 Mainway Unit 19 • Burlington, Ontario Canada L7M 3X1 • 905/336-8880  
www.accraply.com • sales@accraply.com